

**NOT the Current Plan**

# Gold 50/50

THIS SIDE IS FOR  
CHILD CARE PROVIDER



## In Building

### September

1, 3, 8, 10, 14, 15, 17,  
22, 24, 28, 29

### October

1, 6, 8, 12, 13, 15, 20,  
22, 26, 27, 29

### November

3, 5, 9, 10, 12, 17, 19,  
23, 24

### December

1, 3, 7, 8, 10, 15, 17,  
21

### January

5, 7, 11, 12, 14, 19,  
21, 26, 28

### February

1, 2, 4, 9, 11, 16, 18,  
22, 23, 25

### March

2, 4, 8, 9, 11, 16, 18,  
22, 23, 25

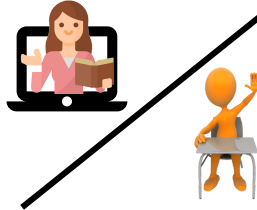
### April

6, 8, 12, 13, 15, 20,  
22, 26, 27, 29

### May

4, 6, 10, 11, 13, 18,  
20, 25, 27

MON



TUE



WED



THU



FRI



## At home

### August/September

31 / 2, 4, 9, 11, 16, 18,  
21, 23, 25, 30

### October

2, 5, 7, 9, 14, 16, 19,  
21, 23, 28, 30

### November

2, 4, 6, 11, 13, 16, 18,  
20, 30

### December

2, 4, 9, 11, 14, 16, 18,  
22

### January

4, 6, 8, 13, 15, 20, 22,  
25, 27, 29

### February

3, 5, 8, 10, 12, 17, 19,  
24, 26

### March

1, 3, 5, 10, 12, 15, 17,  
19, 24, 26

### April

5, 7, 9, 14, 16, 19, 21,  
23, 28, 30

### May

3, 5, 7, 12, 14, 17, 19,  
24, 26